

Carlisle Mencap Recruitment Information



CEO Welcome



Hello, I'm Catherine, I'm delighted that you're interested in joining our team. Like you, I embarked on a new career a couple of years ago and I can honestly say that I have never looked back. Working with someone with a learning disability is not always easy and it is not for everyone, but for the right person, this opportunity is much more than a job.

Our organisation has been built by our people and compassion, dignity and respect are at the heart of all we do. If you believe like I do, that everyone with a learning disability has the right to live happy and healthy lives, this is the job for you.

The following pack offers you some information about Carlisle Mencap as an organisation, its people and its services, please get in touch with any questions you may have, it would be great to talk to you. **Catherine Burn - Chief Executive Officer**

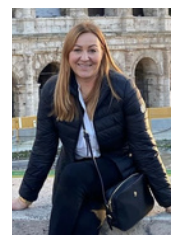
Meet the Managers



Catherine Burn
Chief Executive Officer



Sonia McMillan
Office Manager



Joanna Bazydlo
Finance Manager



Wendy Wilson
Staff and Service
Development Manager



Michelle Thompson
Registered Manager
Domiciliary Care



Charlotte Crosbie
Grace Little Centre
Manager



Jenny Farish
Registered Manager
California House

OUR MISSION AND VALUES

Our mission is to empower people with a learning disability, their families and carers to live happy and healthy lives.

PERSON CENTRED

We put people at the heart of everything we do

ADVOCACY

We act as a voice for those people seldom heard

RESPECT

We are compassionate and treat everyone with dignity and respect



Charity No: 1115348



@mencapcarlisle



@carlisle Mencap

Children's Services



The children's and young people services are based out of the Grace Little Centre and in the community and include a diverse range of activities. We work with a number of children and young people on an outreach basis, supporting them out of school hours to strive for independence and to socialise with others, gaining vital life skills.

Further to this we put on targeted short breaks, a Saturday club called Activ8tors, Children in Need weekend holidays and much more. All this allows for individuals with learning disabilities and/or autism to get involved with accessible activities and gain skills required to develop and thrive.

At the Grace Little Centre we have a sensory room, soft play area, games room and much more. We put on healthy eating sessions, cyber security sessions for our avid gamers, messy colour sessions, sessional parties etc.

We regularly go to Watchtree Wheelers who provide adapted cycling experiences, Maryport aquarium for a sensory experience and many more. We recently visited Cave at the wave in Maryport which boasts of man made soft play caving system perfect for the children and young people, this was a big hit.

Please see our Facebook page for recent activities we have taken part in.



Adult Services



Supported Living

We currently have five Supported Living properties, where we support our service users to manage their own tenancies and support them to develop independent living skills.



California House

California House is an adult respite provision with five bedrooms, two of which have overhead tracking and fully accessible bathrooms.

Service Users come to California House for a respite/holiday stay away from home and have fun with staff and their peers.



Adult Outreach



Outreach support is person centred and designed to meet individual needs. We provide support for people in their own homes, in the community and to access activities. We support service users with domestic tasks like cooking and cleaning and scheduling GP appointments as well as in social activities like going to the cinema, meeting up with friends and attending group activities.



Community Activities and Day Opportunities

We run a number of activities for adults from across Carlisle. From Friday night discos, to Thursday walking groups and Sunday active sessions. We also put on activities like pool and a pint nights and bowling evenings. All of these activities are enjoyed by service users and are often booked up quickly. We have recently employed a sports development officer who is looking to expand the number of accessible sports activities available for adults in our community, which is sadly lacking currently.



Why Choose Carlisle Mencap?



“This is my first job as a support worker and Carlisle Mencap have been amazing. I've had excellent training, learning new skills and every day is different and rewarding.” Lucy has now been successful in gaining a Team Leader role.

Lucy - Team Leader

“I recently joined Mencap. No day is ever the same. From working across our supported living, children's services and adult and children's outreach - there's nothing more rewarding than working together with our service users to reach their full potential. We promote everyone to be as independent as they possibly can and are here to give any help and support needed along the way.”

Jonny - Support Worker/Relief Team Leader



“Hi I’m Sophie, I’ve worked for Carlisle Mencap for over 2 years, the best part of my job is the opportunity to make a positive difference in the lives of others. Being a support worker is a truly rewarding career , helping people on a daily basis and seeing them accomplish their goals”

Sophie - Support Worker

I’ve been at Carlisle Mencap now nearly 2 years and I have loved every minute. The Service users brighten up your day, and the staff team is amazing. Everyone you meet is extremely supportive and helpful. And I really couldn’t see myself being anywhere else. I am currently moving up from Support Worker to Adult Outreach and Supported Living Team Leader, although nervous I am thoroughly excited to take on my new role and I am ready for a new challenge. All my colleagues have supported me during this transition period and have been nothing but happy for me!



Anna- Team Leader

<https://carlisle Mencap.recruitee.com/>

What Our Service Users Say...



My staff help me with my hair and help me feel safe. I like to listen to music. I like volunteering in the office and doing jobs, it makes me feel happy. I like being independent.
I would like new staff in my house please. I want staff to be happy and young. I like to make new friends and to be given choices.

Annie - Service User

The staff are friendly and very helpful

Anonymous - Family Feedback

I feel safe and happy

Anonymous - Service User

A Job for Life



I started working for Carlisle Mencap in 2010. I had just returned from a year abroad and took a part time position as a Children's Support Worker at Saturday Clubs and Playschemes. This fit alongside my other job as a Primary School Teacher.

In 2012 I took full time employment with Carlisle Mencap as a Team Leader in Supported Living and Children's Activities.

Carlisle Mencap has a strong focus on continuing professional development and a supportive management team, which gave me the confidence to take the next step in my career. In 2014 I was successful in becoming Registered Manager for Children's Respite and I gained my Level 5 Diploma in Leadership and Management.

Since taking on my first management position I have worked in both Children's and Adult Services before taking up a role as Business Intelligence Manager and now Service Manager for Supported Living and Adult Outreach.

Existing staff members are supported to set career goals and are encouraged to apply when opportunities for progression arise.

Julie Harrison
Service Manager



"A successful team is a group of many hands but of one mind."

<https://carlisle Mencap.recruitee.com/>